

Students Satisfactory Survey (SSS) (Key Indicator-2.7.1)
Under criteria - II On Teaching Learning and Evaluation.2019-20

Objectives

Based on the guidance of NAAC the objective of this work was to measure and

- a. Teaching learning process.
- b. Effectiveness of communication.
- c. Teaching Learning resources.
- d. Counseling experience of students.
- e. Assessment methods.

Survey Methodology

SBCS Arts, S.V. Commerce, Science & S.V.P.G. College Humnabad. Conducted Students Satisfactory Survey in April-2019 for the academic Year 2018-19. The Survey Covered all Objectives of the Students required to complete students satisfaction SSS was designed as per the guidelines of NAAC. The Survey response of Students was electronically tabulated for analysis and for continual improvement to processes and systems.

Student Satisfaction Survey on Teaching Learning Process

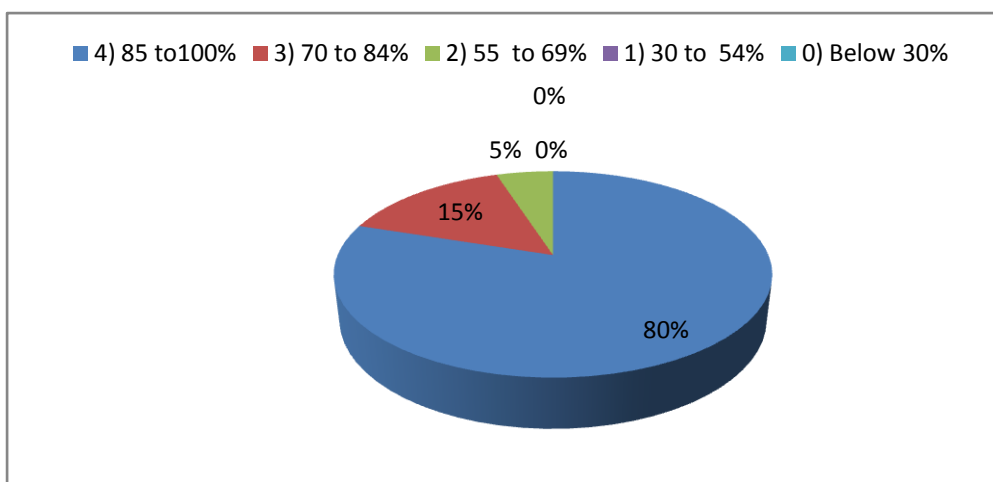
2.7.1 Following are questions for student satisfaction survey regarding teaching learning process.

The number of students responded to the survey=

512

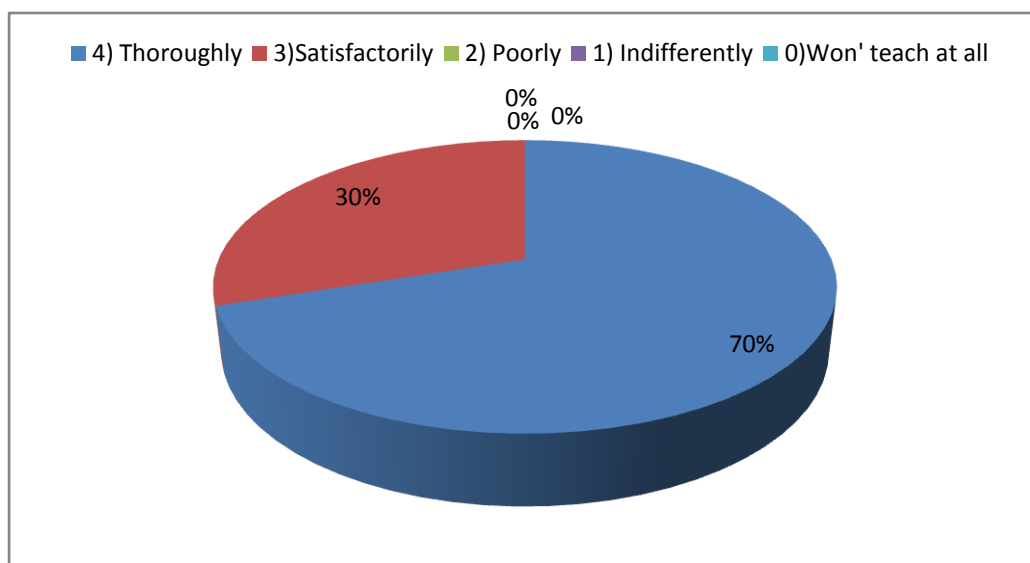
1. How much of the syllabus was covered in the class?

4) 85 to100%	80%
3) 70 to 84%	15%
2) 55 to 69%	5%
1) 30 to 54%	0%
0) Below 30%	0%



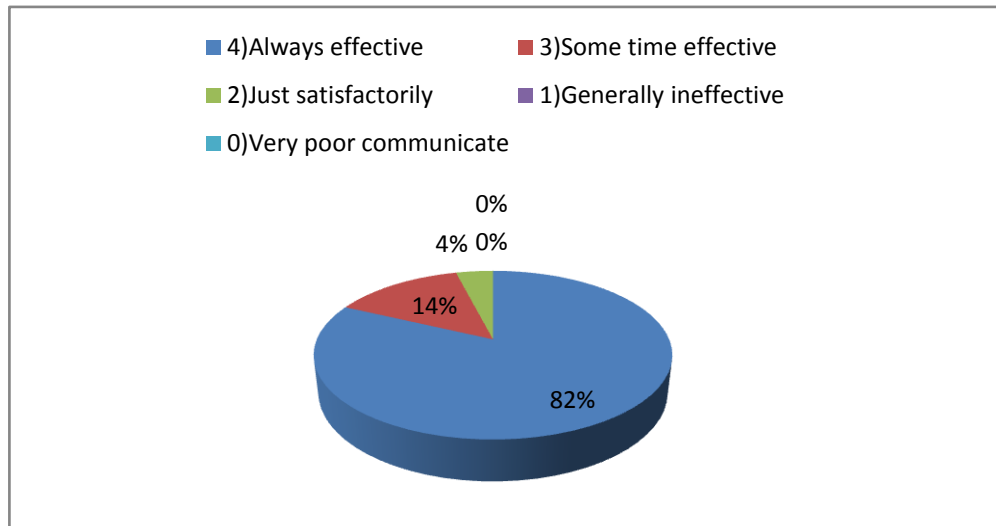
2. How well did the teachers prepare for the classes?

4) Thoroughly	70%
3)Satisfactorily	30%
2) Poorly	0%
1) Indifferently	0%
0)Won' teach at all	0%



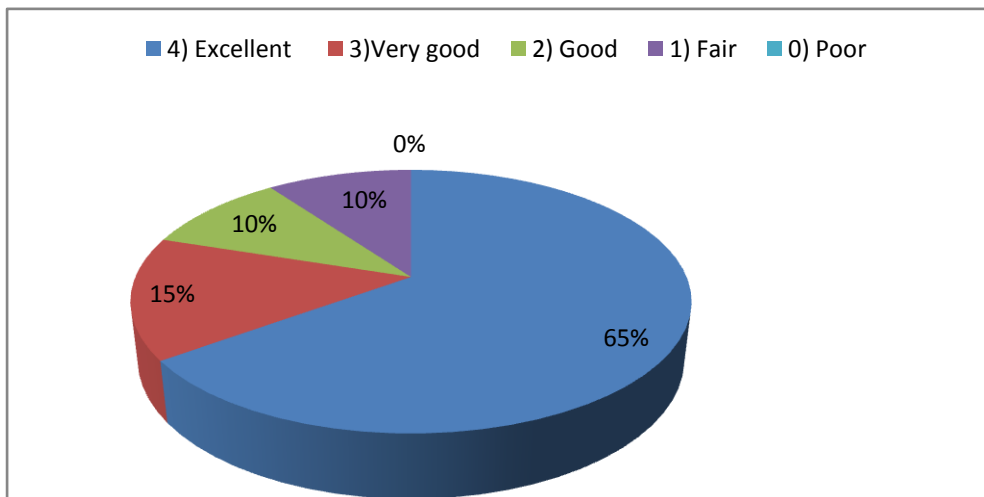
3) How well were the teachers able to communicate?

4) Always effective	82%
3) Some time effective	14%
2) Just satisfactorily	4%
1) Generally ineffective	0%
0) Very poor communicate	0%



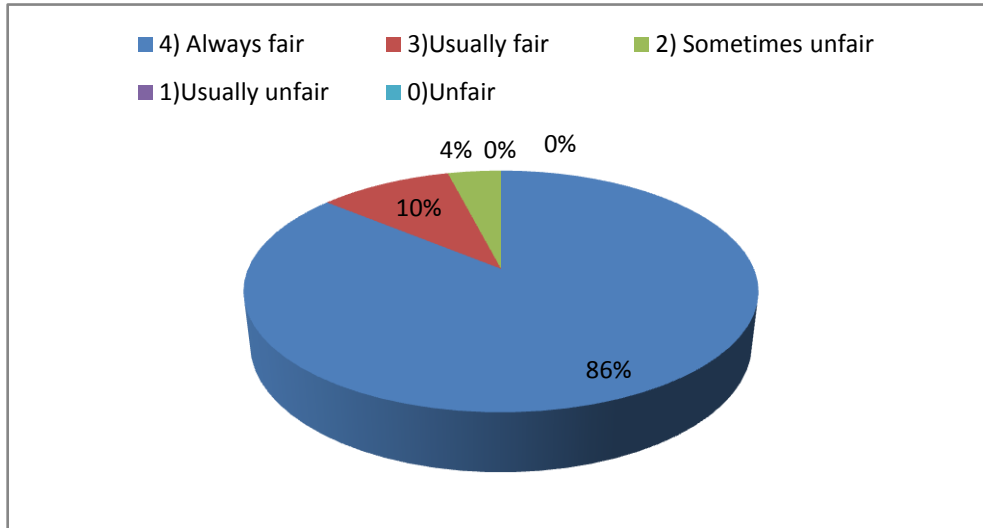
4. Teacher's approach to teaching can best be described as

4) Excellent	65%
3) Very good	15%
2) Good	10%
1) Fair	10%
0) Poor	0%



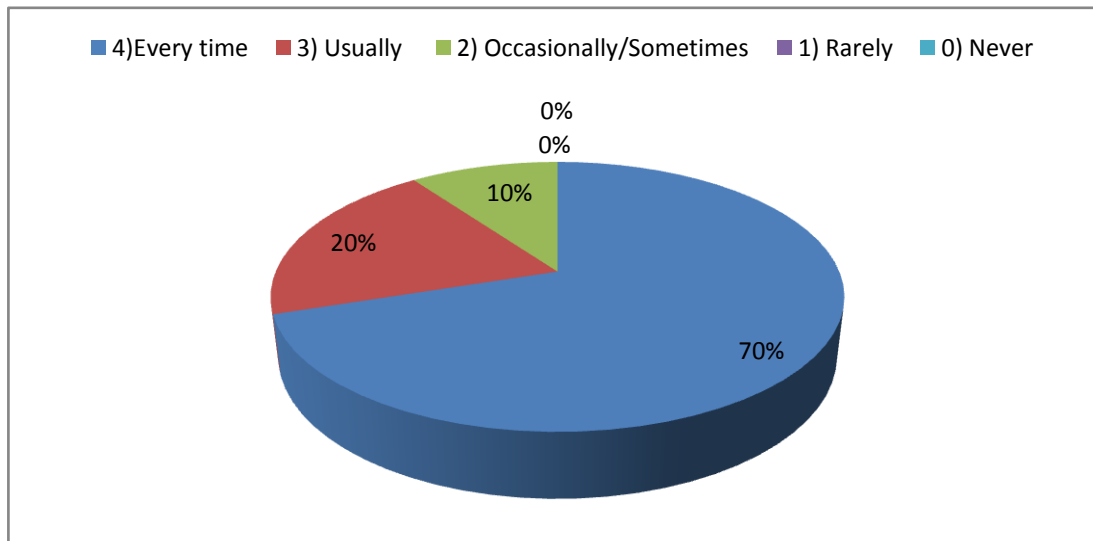
5. Fairness of the internal evaluation process by the teacher.

4) Always fair	86%
3) Usually fair	10%
2) Sometimes unfair	4%
1) Usually unfair	0%
0) Unfair	0%



6) Was your performance in assignments discussed with you?

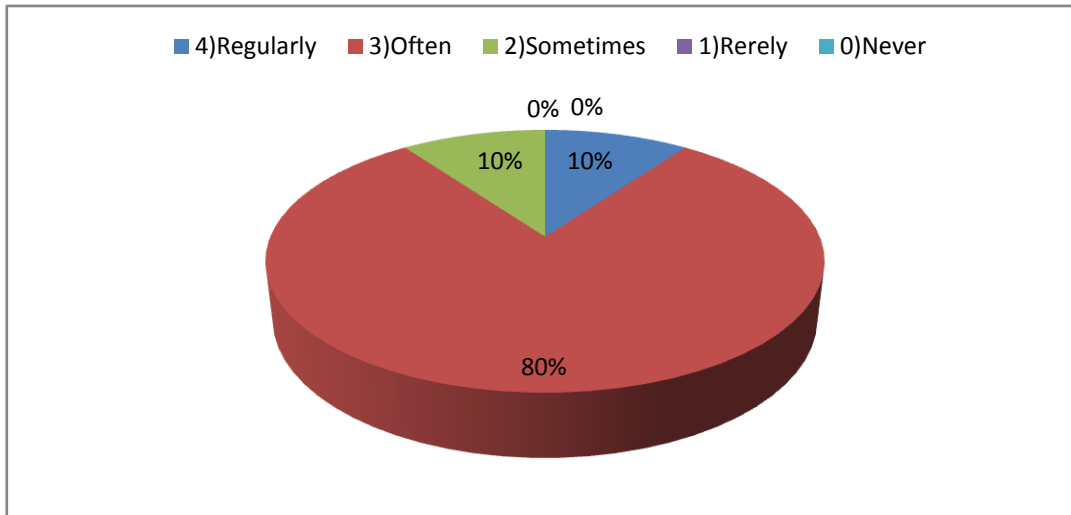
4) Every time	70%
3) Usually	20%
2) Occasionally/Sometimes	10%
1) Rarely	0%
0) Never	0%



7.The institute take active interest in promoting internship, student exchange, field visit opportunities

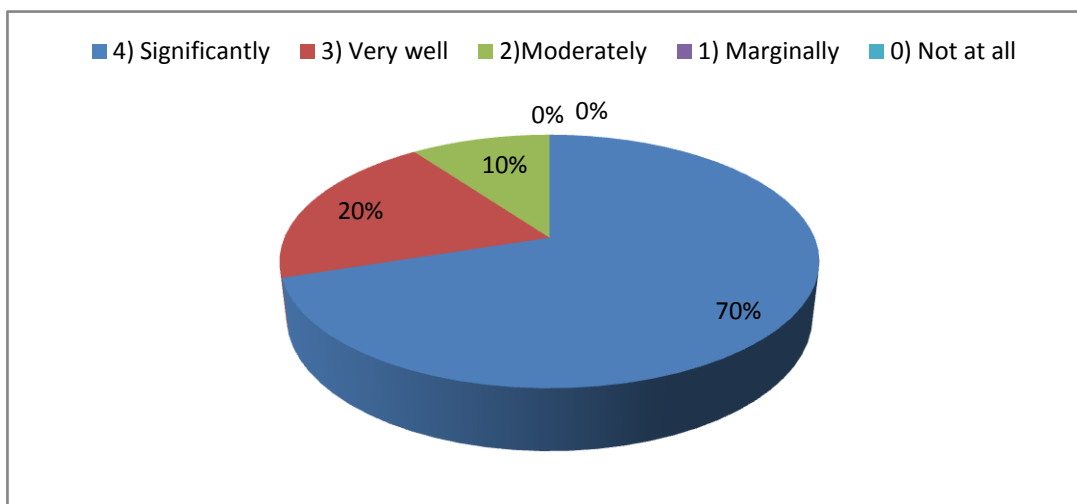
for students

4)Regularly	10%
3)Often	80%
2)Sometimes	10%
1)Rerely	0%
0)Never	0%



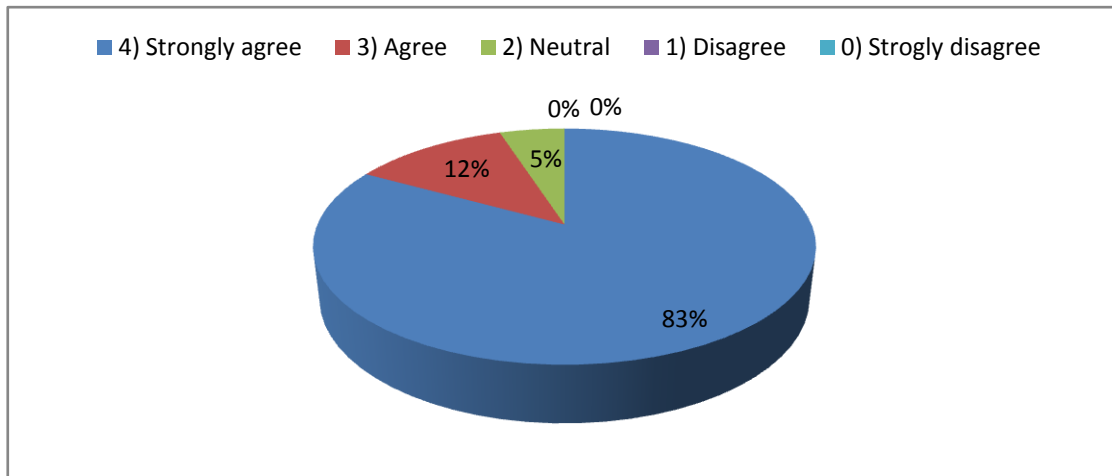
8) The teaching and mentoring process in your institution facilitates you in cognitive, social and emotional growth.

4) Significantly	70%
3) Very well	20%
2)Moderately	10%
1) Marginally	0%
0) Not at all	0%



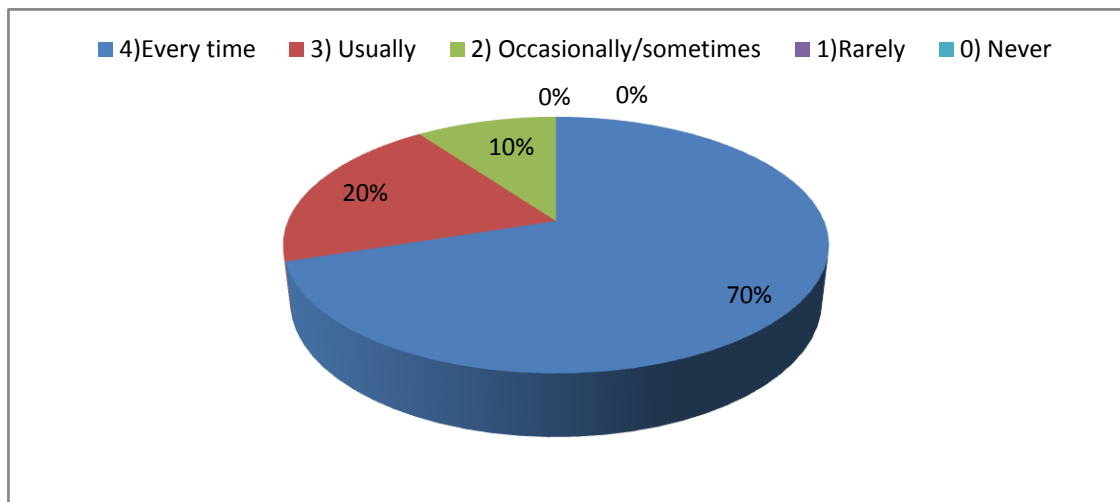
9) The institution provides multiple opportunities to learn and grow.

4) Strongly agree	83%
3) Agree	12%
2) Neutral	5%
1) Disagree	0%
0) Strogly disagree	0%



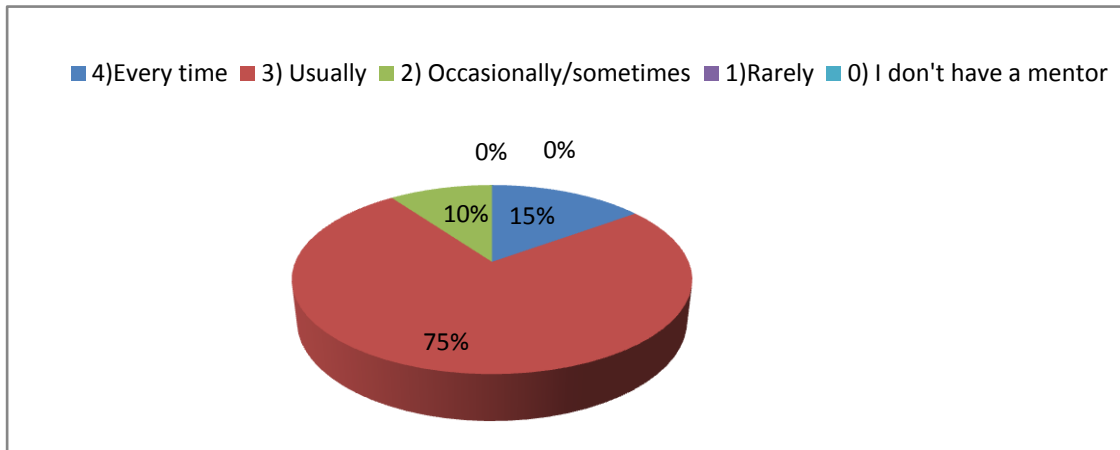
10) Teachers inform you expected competencies, courses outcomes and programme outcomes.

4)Every time	70%
3) Usually	20%
2) Occasionally/sometimes	10%
1)Rarely	0%
0) Never	0%



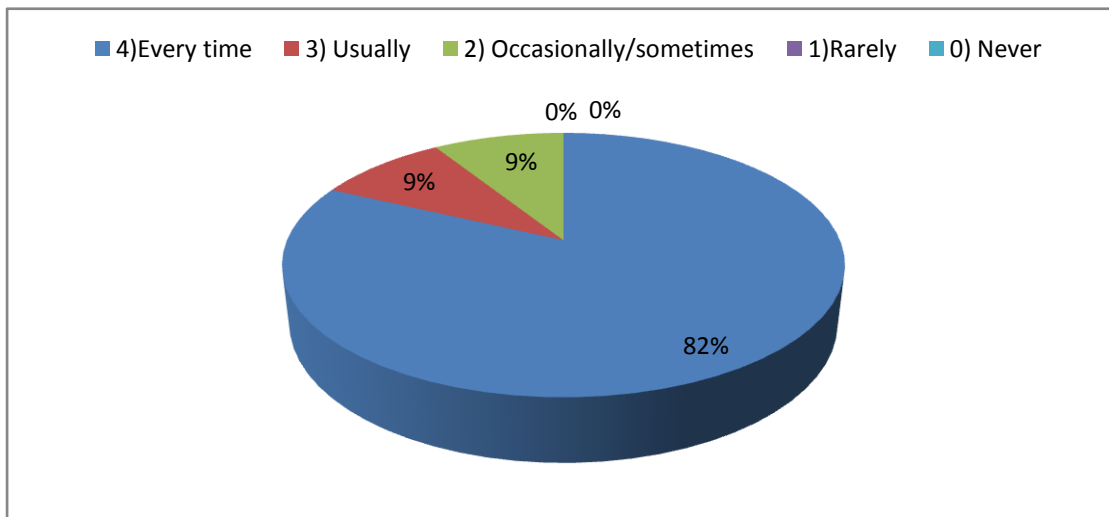
11) Your mentor does a necessary follow-up with an assigned task to you.

4)Every time	15%
3) Usually	75%
2) Occasionally/sometimes	10%
1)Rarely	0%
0) I don't have a mentor	0%



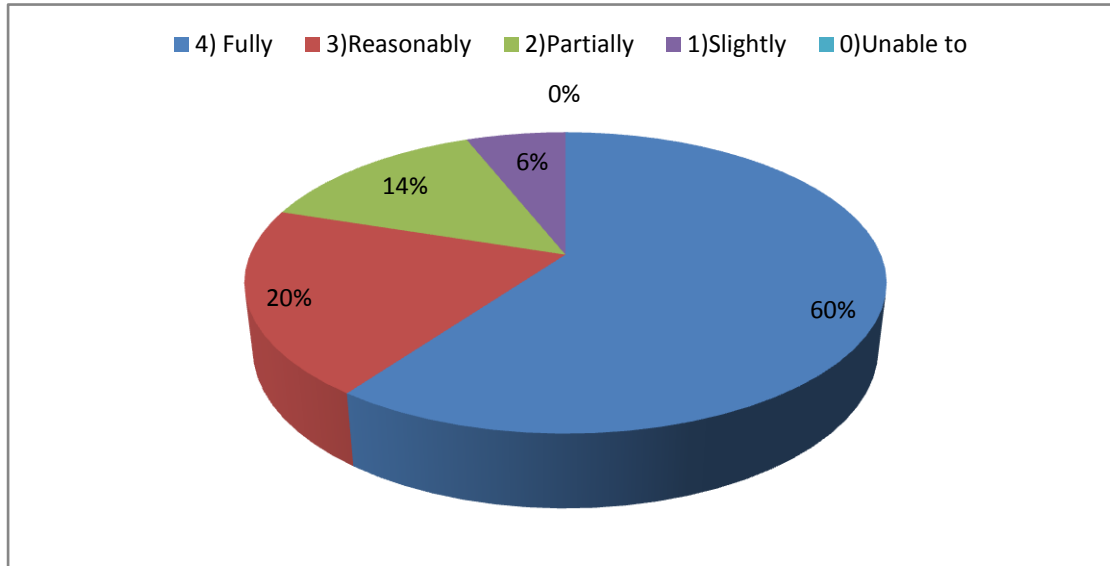
12) The teachers illustrate the concepts through examples and applications.

4)Every time	82%
3) Usually	9%
2) Occasionally/sometimes	9%
1)Rarely	0%
0) Never	0%



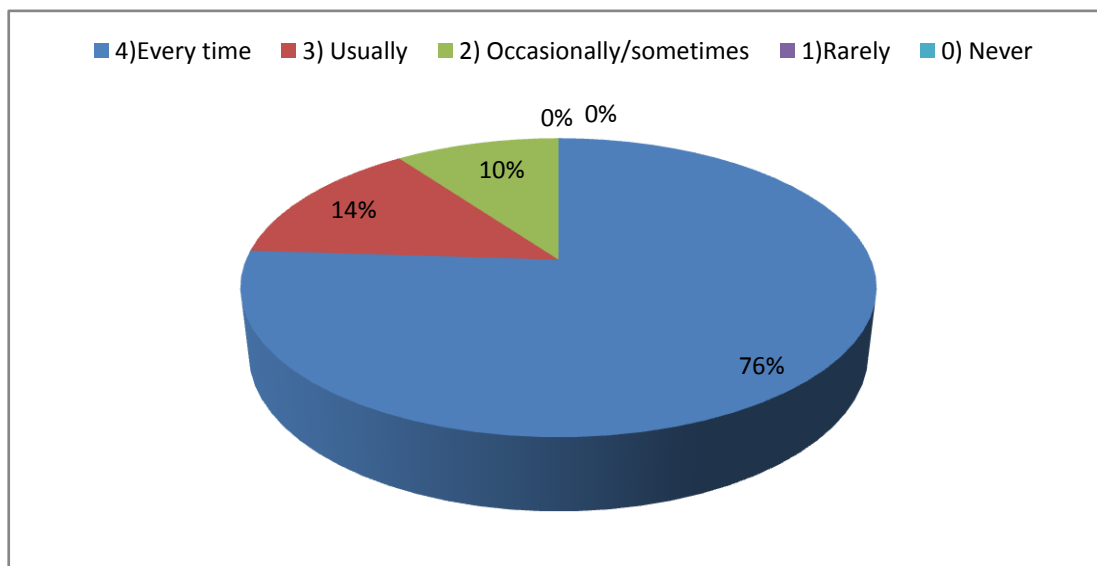
13) The teachers identify your strengths and encourage you with providing right level of challenges.

4) Fully	60%
3)Reasonably	20%
2)Partially	14%
1)Slightly	6%
0)Unable to	0%



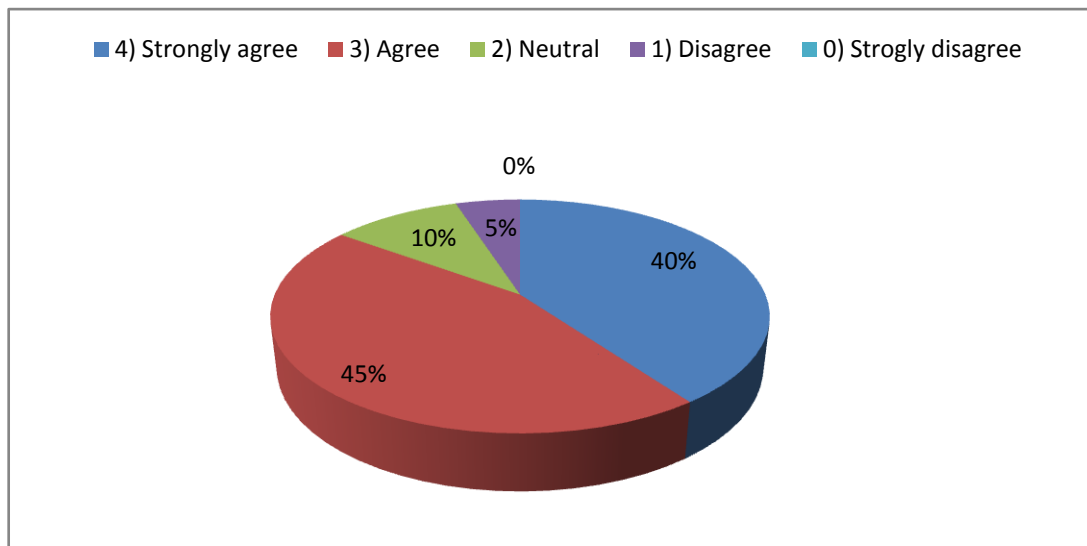
14) Teachers are able to identify your weakness and help you to overcome them.

4)Every time	76%
3) Usually	14%
2) Occasionally/sometimes	10%
1)Rarely	0%
0) Never	0%



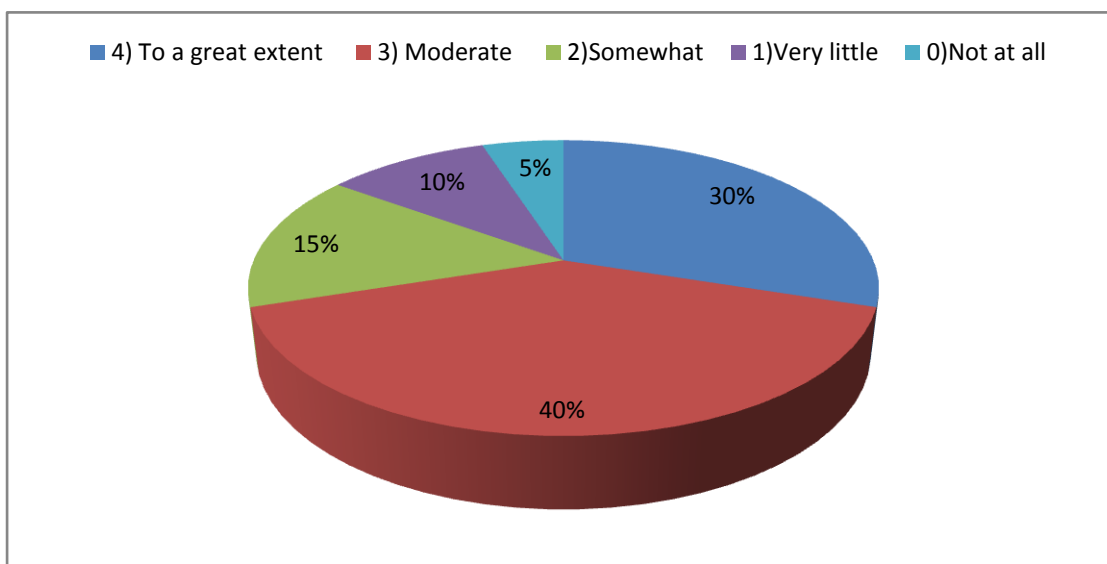
15) The institution makes effort to engage students in the monitoring , review and continuous quality improvement of the teaching learning process

4) Strongly agree	40%
3) Agree	45%
2) Neutral	10%
1) Disagree	5%
0) Strogly disagree	0%



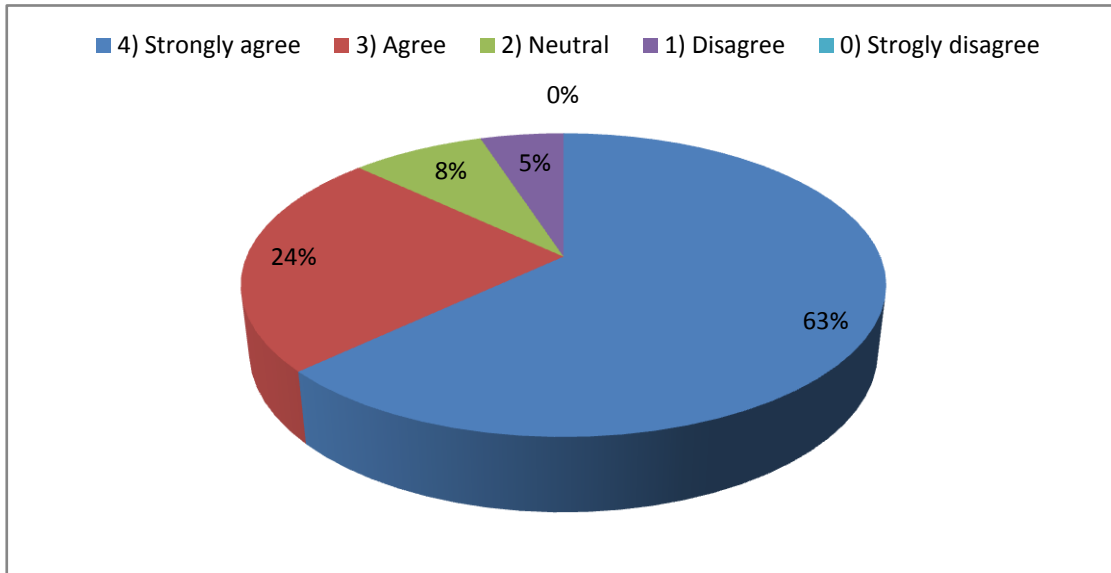
16) The institute /teachers use student centric methods ,such as experiential learning , participative learning and problem solving methodologies for enhancing learning experiences.

4) To a great extent	30%
3) Moderate	40%
2)Somewhat	15%
1)Very little	10%
0)Not at all	5%



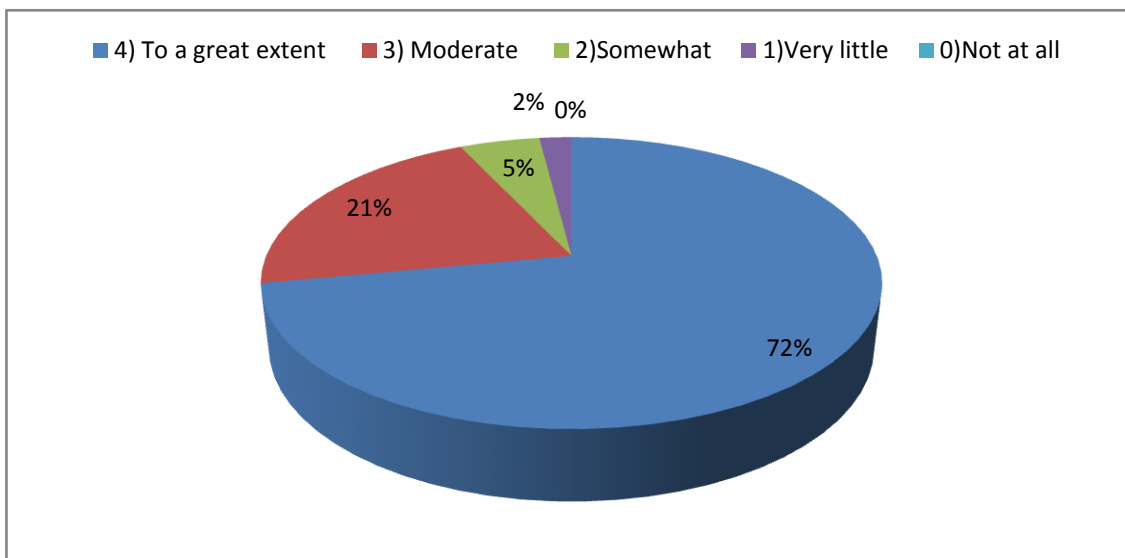
17) Teachers encourage you to participate in extracurricular activities.

4) Strongly agree	63%
3) Agree	24%
2) Neutral	8%
1) Disagree	5%
0) Strongly disagree	0%



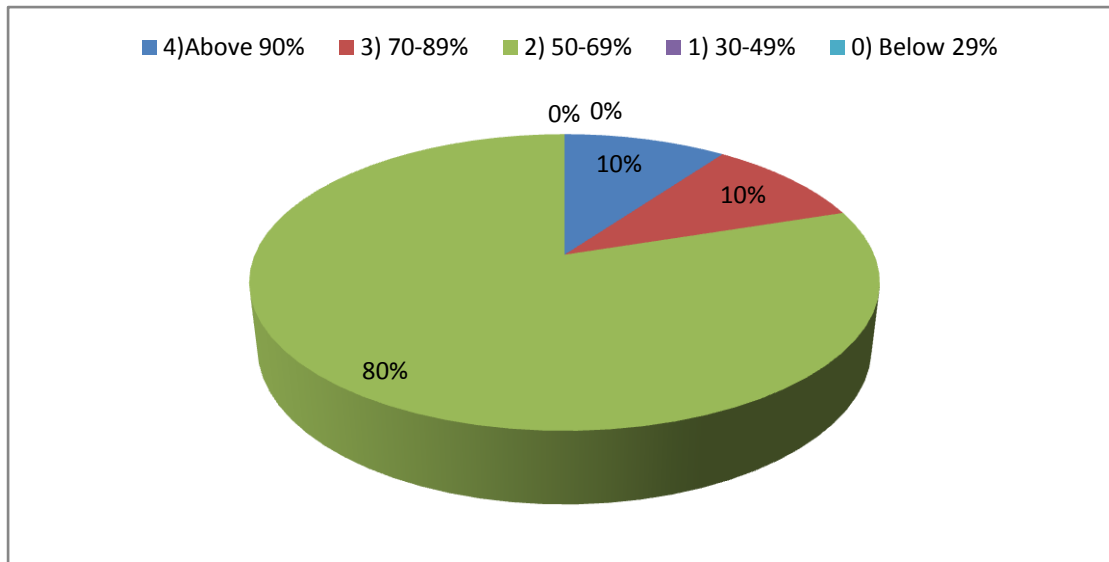
18) Efforts are made by the institute /teachers to inculcate soft skills, life skills and employability skills to make you ready for the world of work

4) To a great extent	72%
3) Moderate	21%
2) Somewhat	5%
1) Very little	2%
0) Not at all	0%



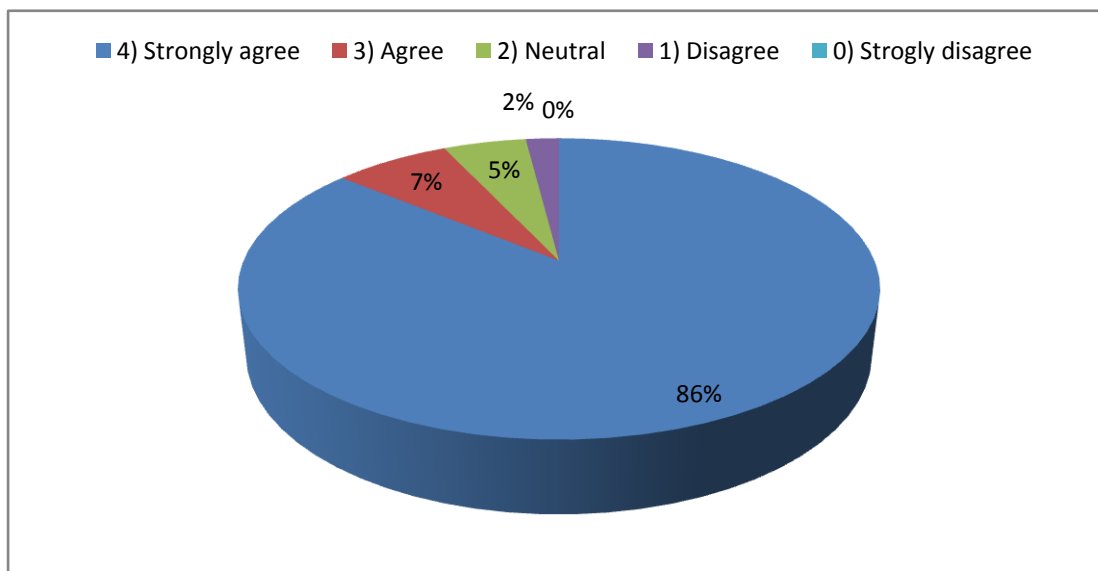
19) What percentage of teachers use ICT tools such as LCD projector, Multimedia,etc. while teaching.

4)Above 90%	10%
3) 70-89%	10%
2) 50-69%	80%
1) 30-49%	0%
0) Below 29%	0%



20) The overall quality of teaching-learning process in your institute is very good.

4) Strongly agree	86%
3) Agree	7%
2) Neutral	5%
1) Disagree	2%
0) Strongly disagree	0%



21) Give three observation/suggestions to improve the overall teaching -learning experiences in your institution.

- Use more ICT tools in teaching.
- Give more than two reference books to the students.
- Organize regular health check up in the campus.