

**Students Satisfactory Survey (SSS) (Key Indicator-2.7.1)**  
**Under criteria - II On Teaching Learning and Evaluation. 2018-19**

**Objectives**

As a part NAAC AQAR (2018-19) Students Satisfactory Survey (SSS) was conducted among the students of our college. The Questionnaire was prepared based on the guidance of NAAC the objective of this work was to measure and analyze the students satisfaction level with our college i'e SBCS Arts, S.V. Commerce, Science& S.V.P.G. College Converted in the following areas.

- a. Teaching learning process.
- b. Effectiveness of communication.
- c. Teaching Learning resources.
- d. Counseling experience of students.
- e. Assessment methods.

**Survey Methodology**

SBCS Arts, S.V. Commerce, Science & S.V.P.G. College Humnabad. Conducted Students Satisfactory Survey in April-2019 for the academic Year 2018-19. The Survey Covered all Objectives of the Students required to complete students satisfaction SSS was designed as par the guidelines of NAAC. The Survey response of Students was electronically tabulated for analysis and for continual improvement to processes and systems.

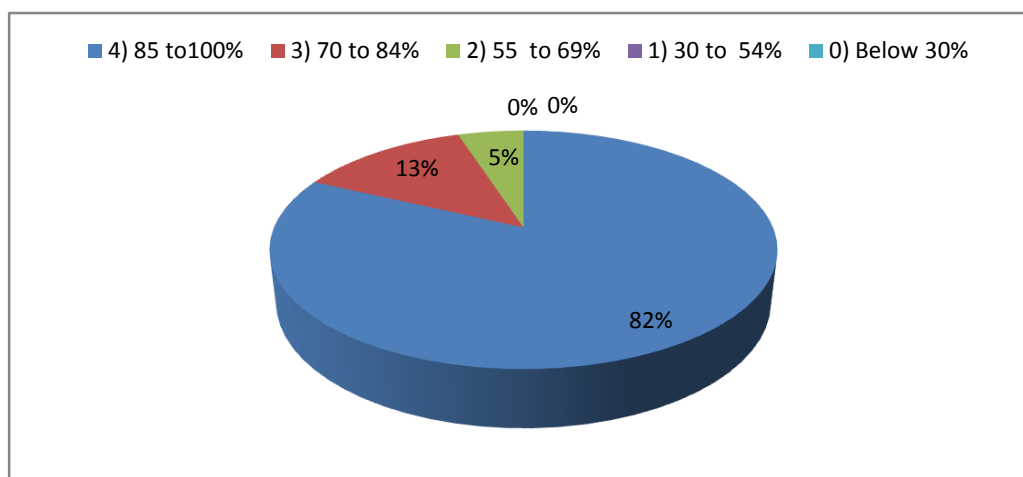
## Student Satisfaction Survey on Teaching Learning Process

2.7.1 Following are questions for student satisfaction survey regarding teaching learning process.

The number of students responded to the survey= 509

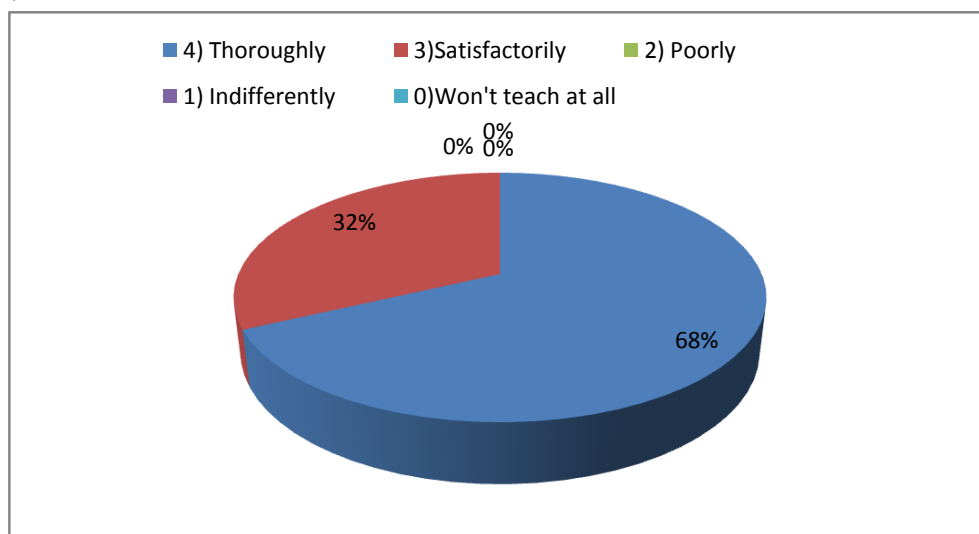
### 1. How much of the syllabus was covered in the class?

4) 85 to 100%	82%
3) 70 to 84%	13%
2) 55 to 69%	5%
1) 30 to 54%	0%
0) Below 30%	0%



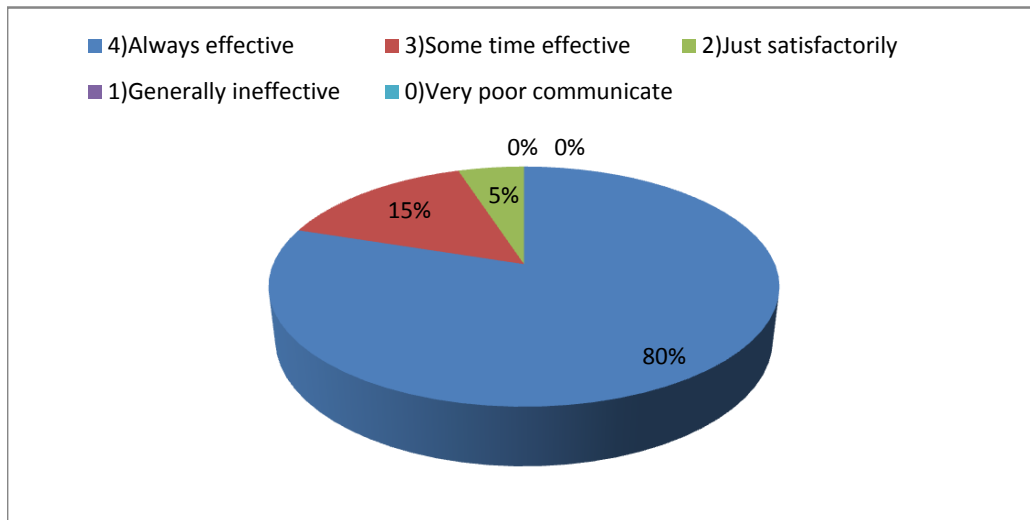
### 2. How well did the teachers prepare for the classes?

4) Thoroughly	68%
3) Satisfactorily	32%
2) Poorly	0%
1) Indifferently	0%
0) Won't teach at all	0%



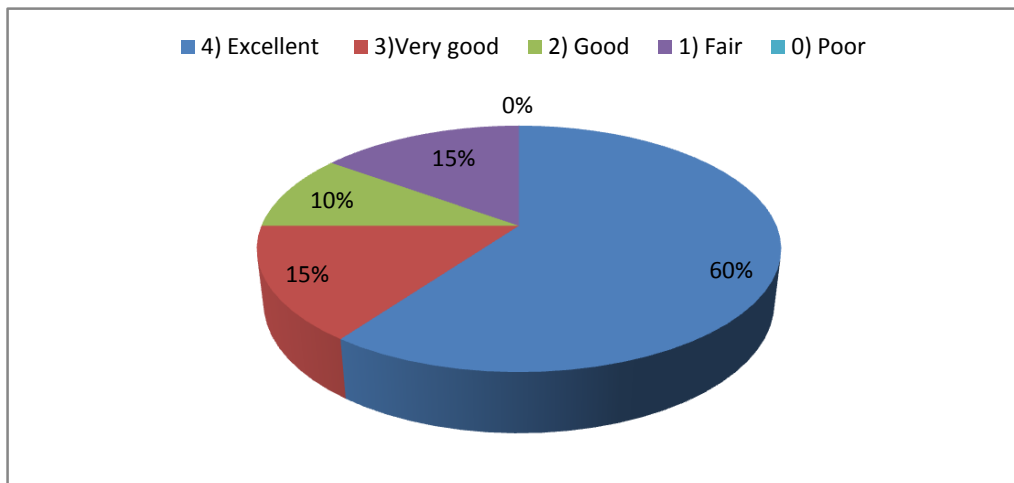
### 3) How well were the teachers able to communicate?

4)Always effective	80%
3)Some time effective	15%
2)Just satisfactorily	5%
1)Generally ineffective	0%
0)Very poor communicate	0%



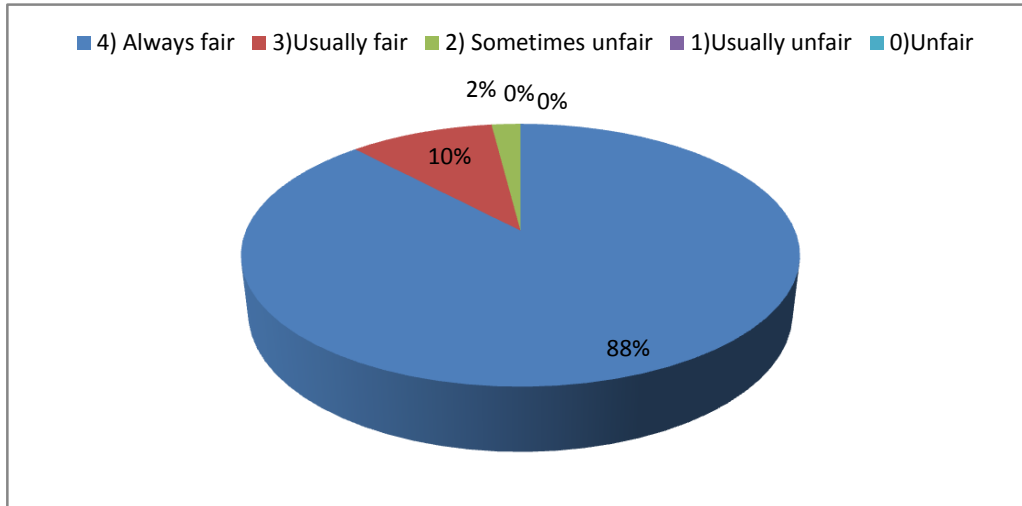
### 4. Teacher's approach to teaching can best be described as

4) Excellent	60%
3)Very good	15%
2) Good	10%
1) Fair	15%
0) Poor	0%



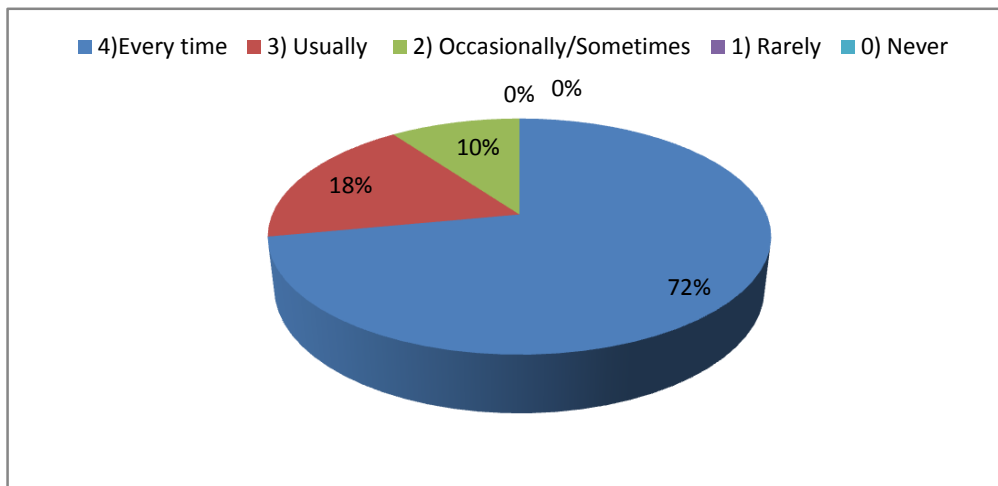
### 5. Fairness of the internal evaluation process by the teacher.

4) Always fair	88%
3) Usually fair	10%
2) Sometimes unfair	2%
1) Usually unfair	0%
0) Unfair	0%



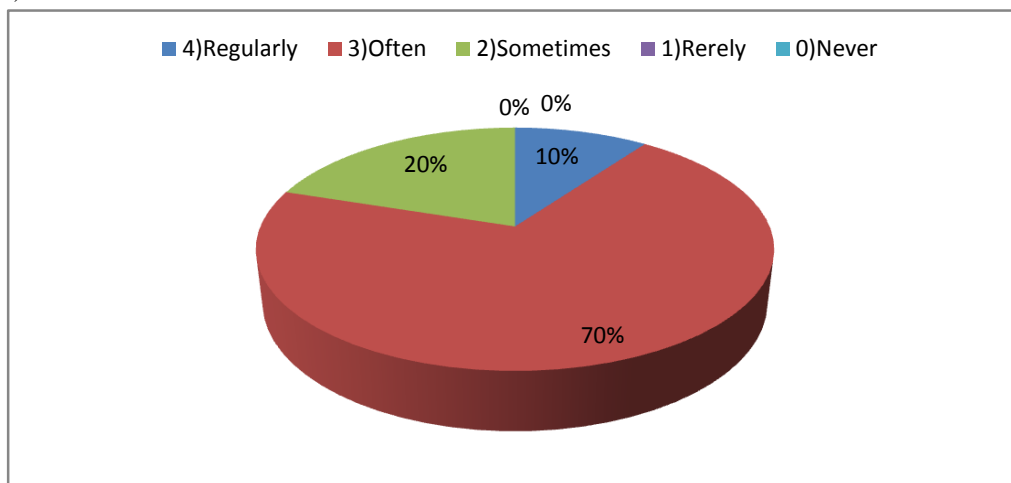
### 6) Was your performance in assignments discussed with you?

4) Every time	72%
3) Usually	18%
2) Occasionally/Somet	10%
1) Rarely	0%
0) Never	0%



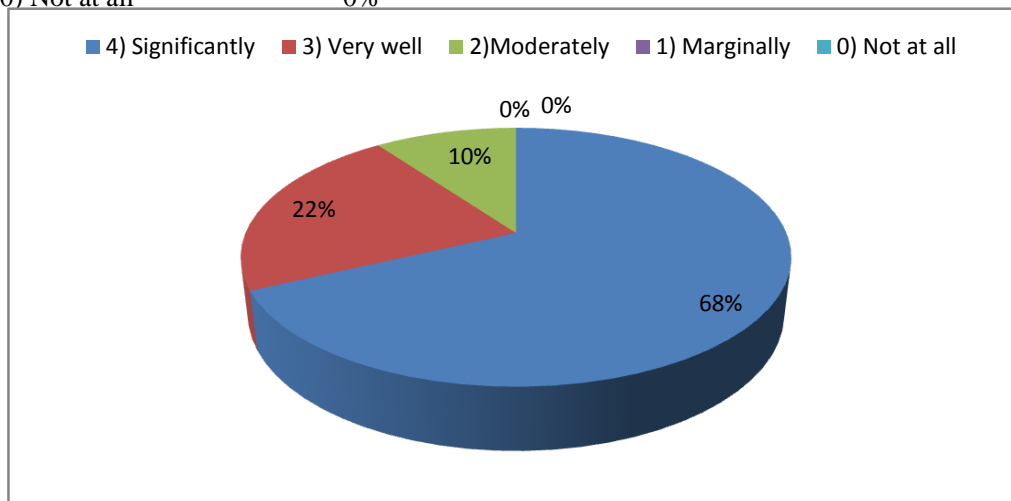
**7.The institute take active interest in promoting internship, student exchange, field visit opportunities for students**

4)Regularly	10%
3)Often	70%
2)Sometimes	20%
1)Rerely	0%
0)Never	0%



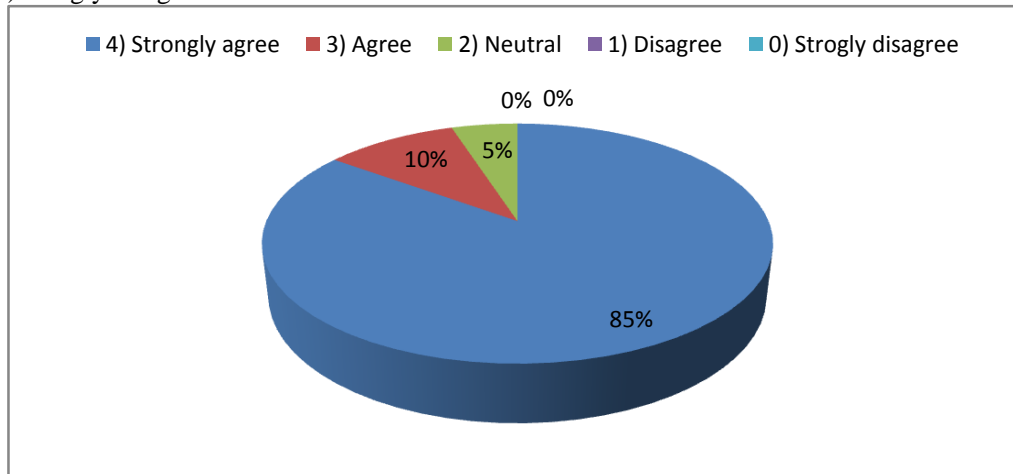
**8) The teaching and mentoring process in your institution facilitates you in cognitive, social and emotional growth.**

4) Significantly	68%
3) Very well	22%
2)Moderately	10%
1) Marginally	0%
0) Not at all	0%



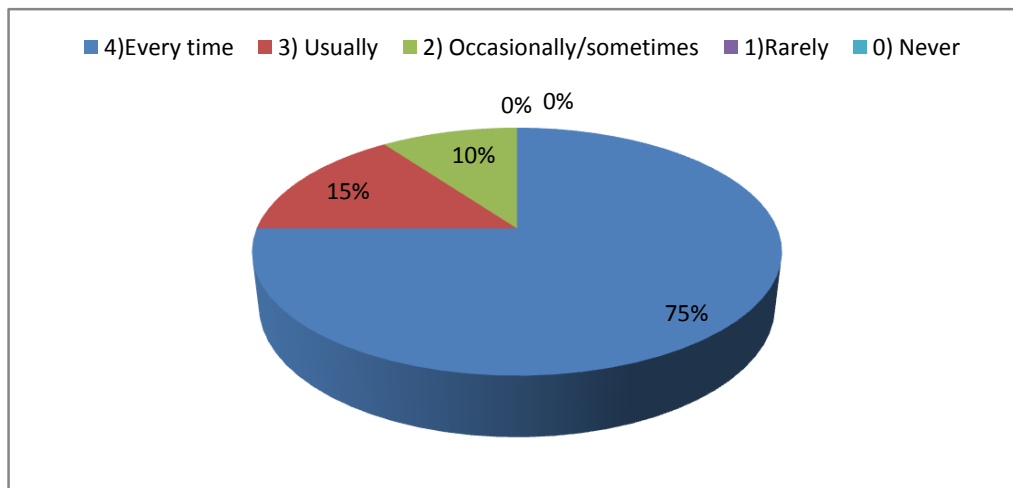
**9) The institution provides multiple opportunities to learn and grow.**

4) Strongly agree	85%
3) Agree	10%
2) Neutral	5%
1) Disagree	0%
0) Strogly disagree	0%



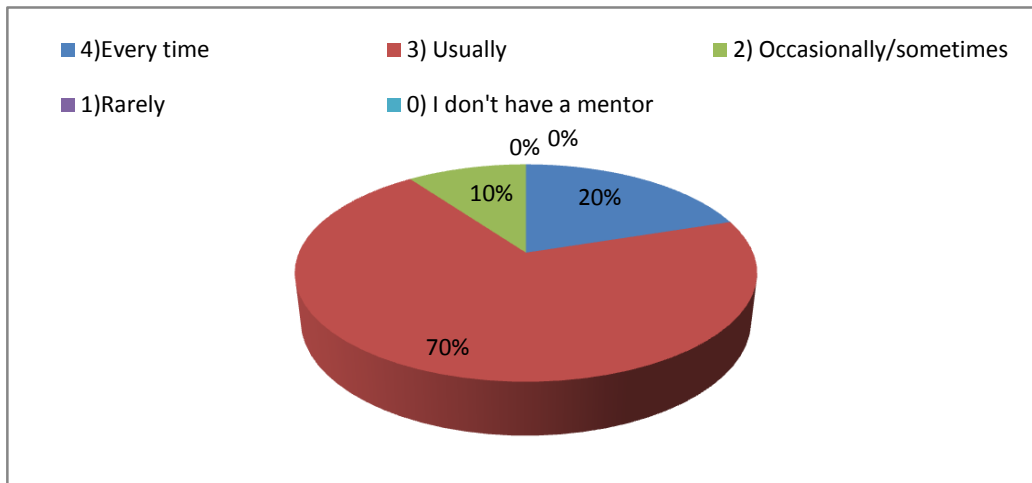
**10) Teachers inform you expected competencies, courses outcomes and programme outcomes.**

4)Every time	75%
3) Usually	15%
2) Occasionally/someti	10%
1)Rarely	0%
0) Never	0%



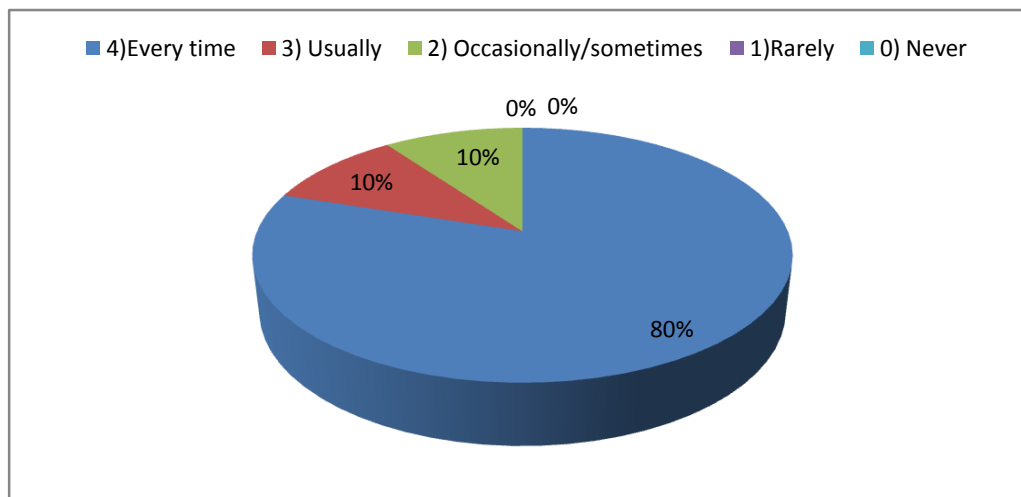
**11) Your mentor does a necessary follow-up with an assigned task to you.**

4)Every time	20%
3) Usually	70%
2) Occasionally/someti	10%
1)Rarely	0%
0) I don't have a mentc	0%



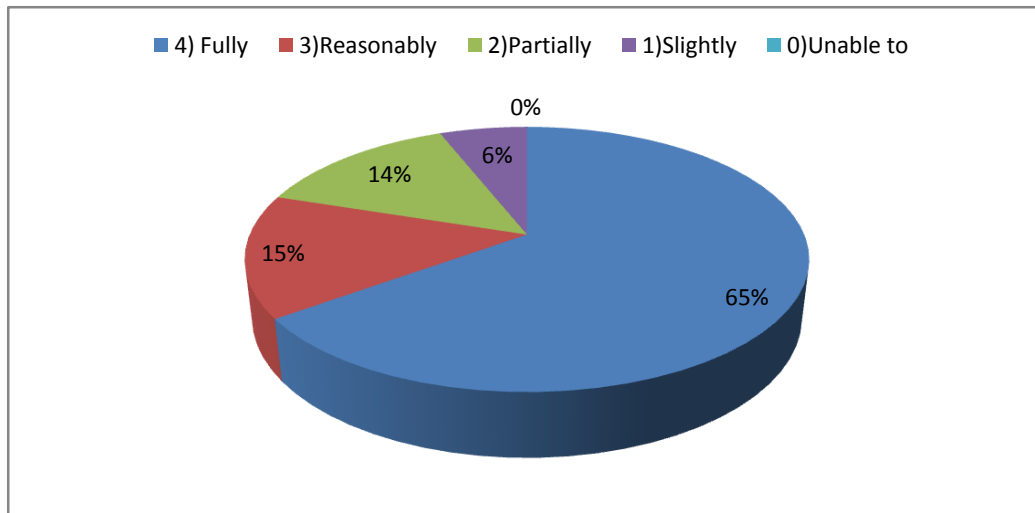
**12) The teachers illustrate the concepts through examples and applications.**

4)Every time	80%
3) Usually	10%
2) Occasionally/someti	10%
1)Rarely	0%
0) Never	0%



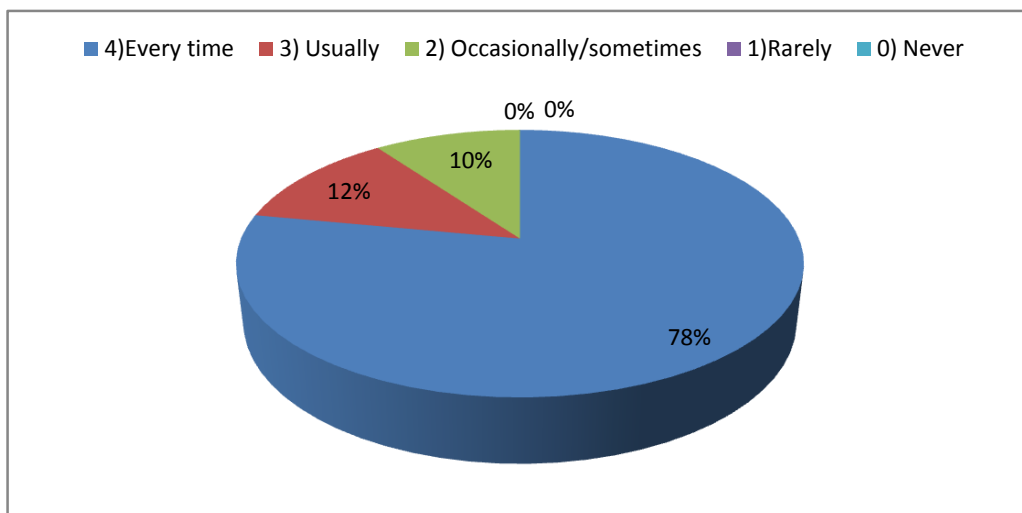
**13) The teachers identify your strengths and encourage you with providing right level of challenges.**

4) Fully	65%
3) Reasonably	15%
2) Partially	14%
1) Slightly	6%
0) Unable to	0%



**14) Teachers are able to identify your weakness and help you to overcome them.**

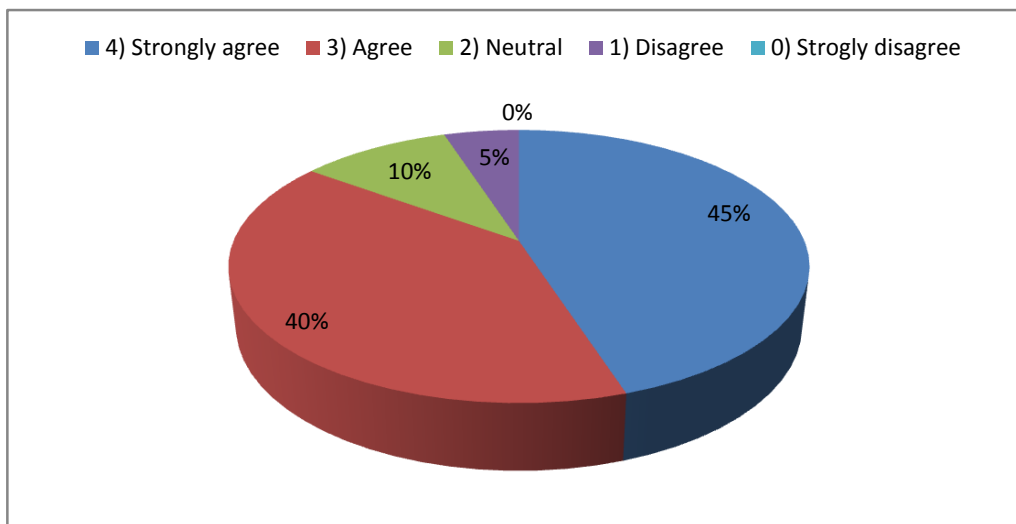
4) Every time	78%
3) Usually	12%
2) Occasionally/sometimes	10%
1) Rarely	0%
0) Never	0%





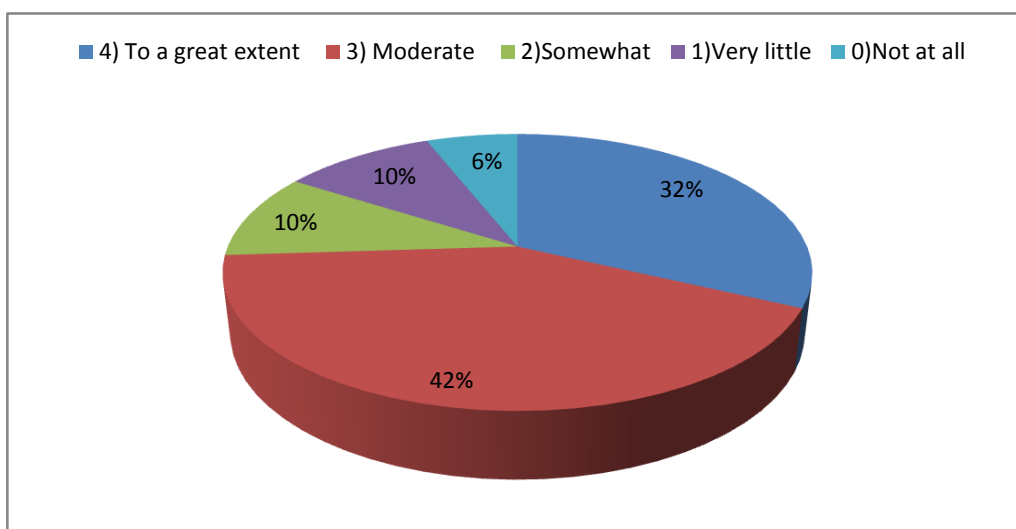
**15) The institution makes effort to engage students in the monitoring , review and continuous quality improvement of the teaching learning process**

4) Strongly agree	45%
3) Agree	40%
2) Neutral	10%
1) Disagree	5%
0) Strogly disagree	0%



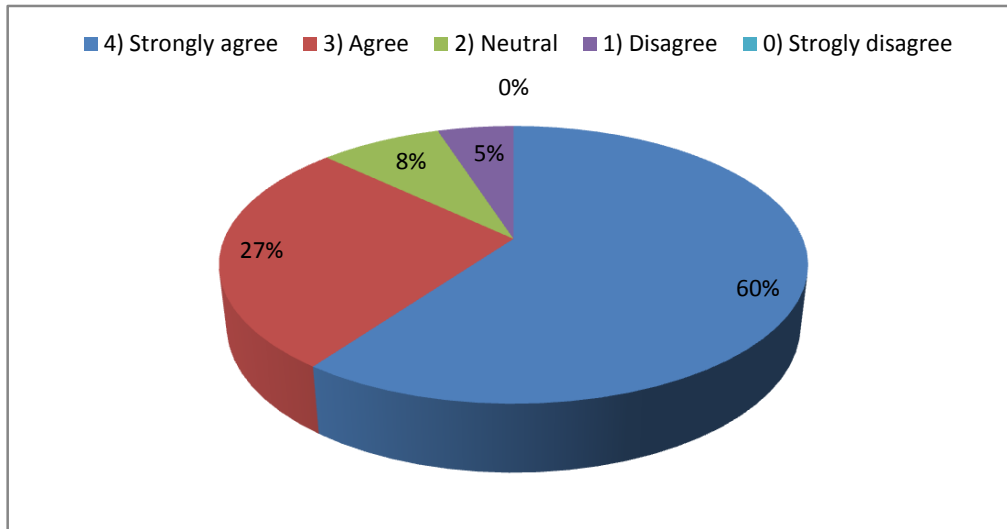
**16) The institute /teachers use student centric methods ,such as experiential learning , participative learning and problem solving methodologies for enhancing learning experiences.**

4) To a great extent	32%
3) Moderate	42%
2)Somewhat	10%
1)Very little	10%
0)Not at all	6%



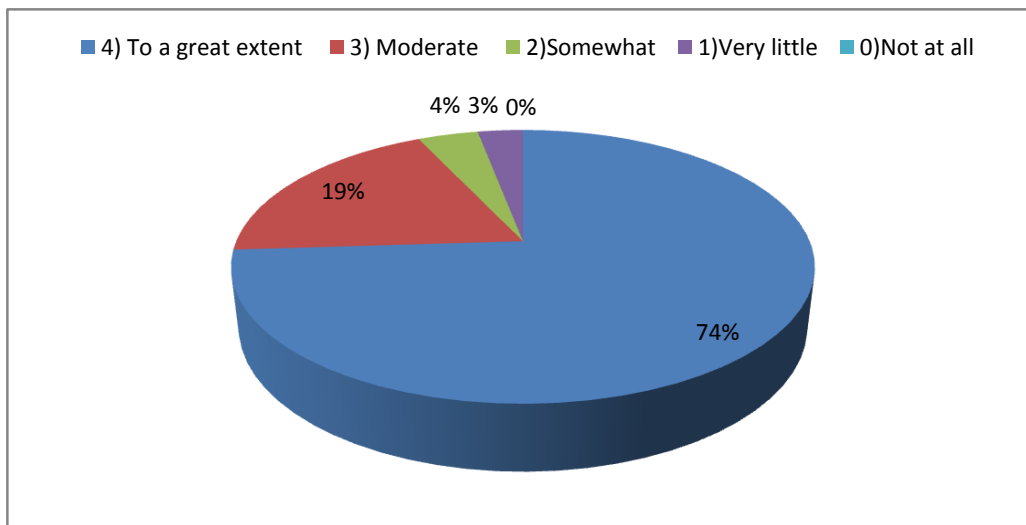
**17) Teachers encourage you to participate in extracurricular activities.**

4) Strongly agree	60%
3) Agree	27%
2) Neutral	8%
1) Disagree	5%
0) Strongly disagree	0%



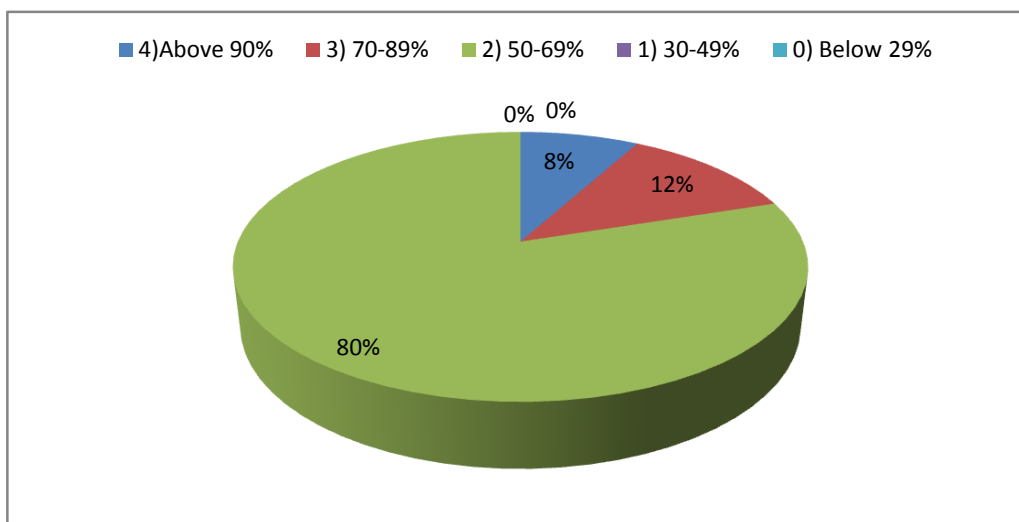
**18) Efforts are made by the institute /teachers to inculcate soft skills, life skills and employability skills to make you ready for the world of work**

4) To a great extent	74%
3) Moderate	19%
2) Somewhat	4%
1) Very little	3%
0) Not at all	0%



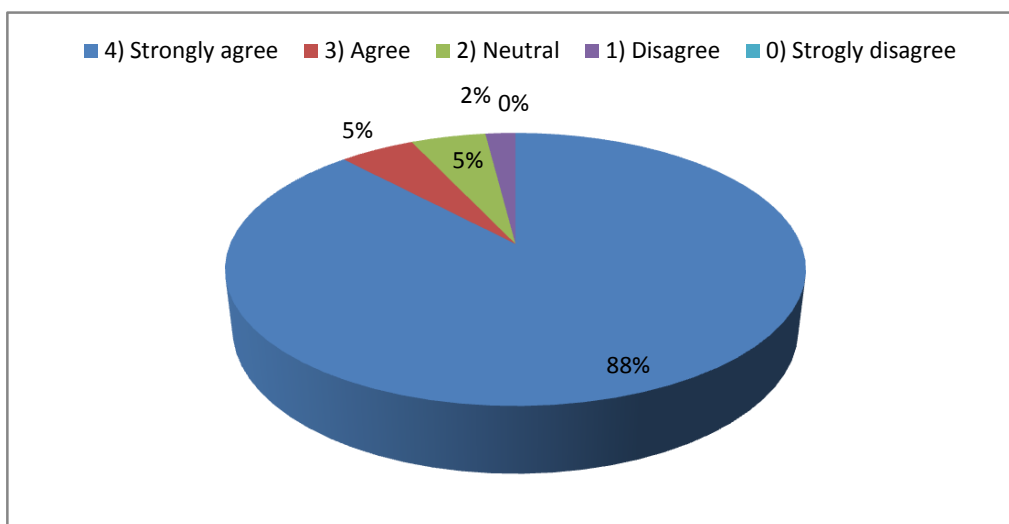
**19) What percentage of teachers use ICT tools such as LCD projector, Multimedia,etc. while teaching.**

4)Above 90%	8%
3) 70-89%	12%
2) 50-69%	80%
1) 30-49%	0%
0) Below 29%	0%



**20) The overall quality of teaching-learning process in your institute is very good.**

4) Strongly agree	88%
3) Agree	5%
2) Neutral	5%
1) Disagree	2%
0) Strongly disagree	0%



**21) Give three observation/suggestions to improve the overall teaching -learning experiences in your institution.**

- a) Use more ICT tools in teaching.
- b) Give more than one reference books to the students.
- c) Organize regular health check up in the campus.